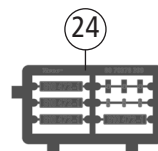
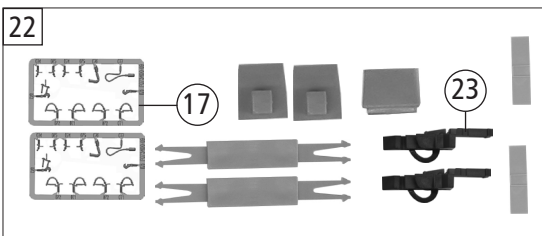
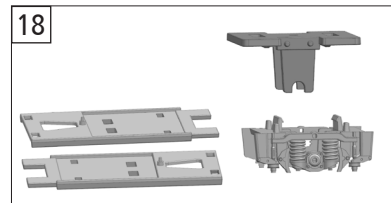
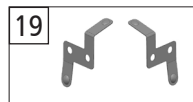
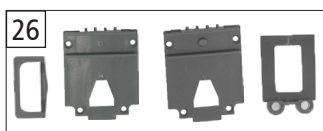
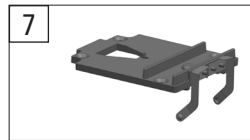
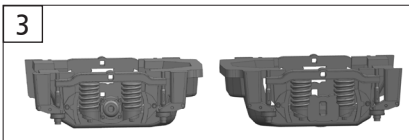
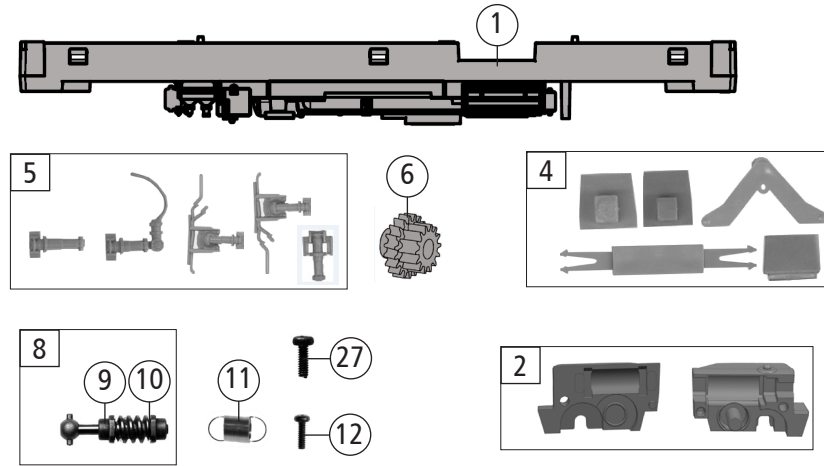


Pos. Nr. Pos.no.	Beschreibung Description	Art.-Nr. Art.no.	Preisgruppe Price bracket
70378 CZ-CD RH 810 =			
70379 = 🔊			
1	Inneneinrichtung MW Interior fittings	145138	17
2	E-Lokführer Loco-driver	126797	6
3	TS - Sitze TW + BW Part set - Seats	145428	9
4	Rahmendeckel MW+BW Frame cover	145679	8
5	TS - Leitung, Kessel Part set - Lines,tank	145680	7
6	Gehäuse MW kpl. Betr. nr. 810 472-1 Body complete Loco no. 810 472-1	145689	36
7	Tritt Li+Re Treadle L+R	145685	6
8	Gehäuse BW kpl. Betr. nr. 50 54 93-29 047-0 Body complete Loco no. 50 54 93-29 047-0	145694	34
9	Platine analog MW PLUX-16 PCB analog	145149	18
10	Platine Innenbel. TW/BW PCB interior lights	145150	18
11	Brückenstecker TVS PLUX-16 Jumper	133241	10
12	Motor KM Schwungm.+2 Kardansch. Motor with flywheel+2 cardan reception	145151	17
13	Antenne + Pfeife Antennas + whistle	145681	6
14	Spiegel li + re Mirrors L + R	145640	5
15	TS - Fenster MW/BW Part set - Windows	145154	14
16	Lichtnagel Light pin	145155	3
17	Scheibenwischer Li.+Re. Wipers L+R	145387	6
18	TS - Griffe Part set - Handles	145690	12
19	Inneneinrichtung BW Interior fittings	145160	8
20	Platine analog BW PLUX-16 PCB analog	145164	18
21	Brückenstecker PLUX-16 Jumper	129630	10
22	Tritt Li+Re BW Treadle L+R	145143	6
23	TS - Lichtnagel Part set - Light pin	145173	6
24	Kardanschale Motor Motor cardan reception	145383	4
25	Kardanwelle L=20 mm Cardan shaft	100260	4
26	SK - Schraube M 1,6x4 mm SK - Screw	115161	3
27	M-Kontaktfeder D=2,3 L=9,9 mm Contact spring	116812	3
Sound			
28	Platine Onboarddecoder MW PCB	145170	43
29	Lautsprecher Loudspeaker	129524	14
30	Platine digit. BW PLUX-16 PCB digital	145171	13
31	Decoder BW PLUX-16 Decoder	145172	41

Änderungen in Konstruktion und Ausführung vorbehalten
We reserve the right to change the construction and specification



73078		CZ-CD	RH 810	=	
73079				=	🔊
Pos. Nr. Pos.no.	Beschreibung Description	Art.-Nr. Art.no.	Preisgruppe Price bracket		
1	Grundrahmen MW Base frame	145678	18		
2	Getriebesatz 2tlg. Gear set 2 parts	145137	10		
3	DG-Blende 1+2 MW Bogie frame	145682	8		
4	TS - Deichsel Part set - Drawbar	145686	6		
5	TS - Zylinder Part set - Cilinder	145687	8		
6	Schneckenzahnrad Z=19re./14ge. Wormgear	86416	4		
7	Radkontakt Li.+Re. Wheel contact L+R	145147	11		
8	Schneckensatz Worm gear set	145148	13		
9	Lager f. Schneckenachse Worm gear axle housing	89749	6		
10	Beilagscheibe 2,1x4 / 0,2 mm Washer	86108	3		
11	Zugfeder D=2,5 L=2,7/5,8 mm Draw spring	86208	3		
12	SK - Schraube M 1,6x7 mm SK - Screw	116493	3		
13	Standardkupplung Standard coupling	89246	6		
14	Radsatz m.Zahnr. o.Haftr. Wheelset w.gearwh. w/o traction tyre	145688	7		
15	Grundrahmen BW Base frame	145691	15		
16	Puffer MW Buffer	145683	3		
17	TS-Bremsschläuche und Zughaken Part set brake tubes & coupling hooks	139832	7		
18	TS - DG-Blende BW Part set - Bogie frame	145692	10		
19	Radkontakt Li.+Re. BW Wheel contact L+R	145163	10		
20	Radsatz o.Zahnr. o.Haftr. BW Wheelset w/o gearwh. w/o traction tyre	145693	10		
21	Puffer BW Buffer	145695	3		
22	Zurüstbeutel Bag of accesories	145702	12		
23	Kurzkupplung Short coupling	115550	6		
24	Tafelsatz Set of panels	145701	12		
25	Radsatz m.Zahnr. m.1Haftr. Wheelset w.gearwh. w. 1 traction tyre	145700	11		
26	TS - Abdeckungen Part set - Covers	145684	7		
27	GF - Schraube M 1,6x4 mm GF - Screw	114850	3		